



Headbourne Worthy Village News

Summer 2017

News and Information from your local Parish Council

Village Open Spaces

A small area of open space near to the Watercress beds off Bedfield Lane will be maintained in perpetuity for residents' use. This has been arranged due to a planning consent covenant made on building approval of the two houses in Springvale Rd, known as Worthy House and Worthy Barn, which are beside the watercress beds.

The Watercress Company has agreed to maintain this area, which now has open access, and also the footpath from Bedfield Lane to Springvale Road alongside this area. The footpath is already clear of nettles and brambles and is used by local walkers enjoying this quiet spot. They have also repaired the broken footbridge. The Parish Council thanks Grace Gray and Bob Chisnell for their efforts to make this arrangement for the benefit of residents.



Local History Talk Barton Farm Archaeology

Thursday 13th July 2017, 7.45pm

Kings Worthy Primary School Hall

Speaker: Paul McCulloch,
Pre-Construct Archaeology

FREE ENTRY

Waste & Recycling

The City Council is consulting on its Waste & Recycling contract, which is due for renewal soon. Details of the options are on the City Council website, with a survey for you to give your views:

<http://www.winchester.gov.uk/waste-and-recycling/environmental-service-contract-consultation/>

Parish Meetings

The meetings of the Parish Council for the remainder of the year are:

3 July 2017

11 September 2017

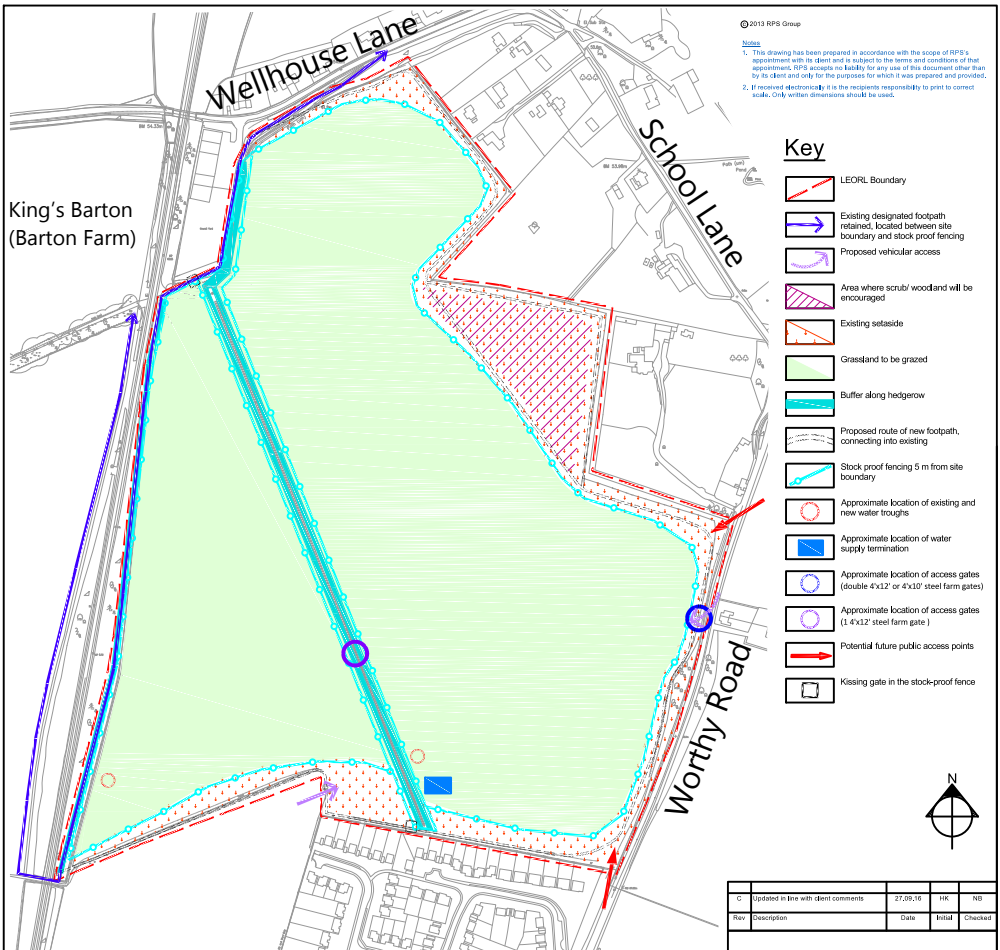
13 November 2017.

All meetings begin at 7.15pm in St Mary's Church Rooms, London Road, Kings Worthy. All local residents welcome.

To contact your Parish Council, visit www.headbourneworthy.org.uk

or contact the Parish Clerk, Jill Judge, email clerk@headbourneworthy.org.uk

Edited and Produced by Cllr Jane Rutter, tel: 01962 884981



Barton Meadows Nature Reserve

The new Barton Meadows footpath is now clearly fenced off from the area that will be the nature reserve, and is available to all of us to use as a welcome addition to our local footpath network. There are two informal access points, where the red arrows are on the indicative map above: one opposite the bus shelter on Worthy Road and the other just past the last houses on the left as you leave Winchester, also from Worthy Road. You can also access the circular footpath from the old footpath

running up the bank on Wellhouse Lane, and from the end of Stoke/Courtenay Road. There are three lovely new benches along the route, which takes in long views across what will be meadowland grazed by cattle, up to the railway line and back towards Winchester. Please use the informal access points - you may need to wear long trousers until the paths have been well trodden - and enjoy this lovely new addition to our local paths network.

Jane Rutter

Annual Parish Meeting Report - by Cllr Claire Welland

The theme of the Annual Parish Meeting on 3 April 2017 was to look at potential infrastructure improvements for Headbourne Worthy. The Parish Council now receives a Community Infrastructure Levy from designated building works in the parish.

This money can only be spent on infrastructure e.g. flood mitigation, open spaces, affordable housing, roads and transport facilities. So far, Headbourne Worthy Parish Council has received

£14,095.37 in Community Infrastructure Levy (CIL) funding. Further funding will likely become available as more development occurs. The Parish Council will continue to discuss appropriate expenditure for this money, and welcomes the views and suggestions of residents.

Please feel free to attend any of our forthcoming regular meetings and give us your views - see front page for details.



Dear Sir/Madam

As your local Neighbourhood Policing Team for the Winchester Rural Area we are able to follow the trends of criminal activity and behaviors in your area, many of these trends become policing priorities for us to tackle and deal with as a matter of urgency in order to keep the area in which you live a safe and friendly place. Following these policing priorities we have our community based priorities which are derived by us as a team from known local issues but decided and set by you the local community as to which we should prioritise.

Please can we ask you to follow the link below and complete our short survey. By completing this survey you will be helping us to narrow down precisely which issues are affecting which areas and set our Policing priorities for the next six months. This survey needs to be completed by 01/07/2017.

This is the link to our Survey Monkey:

<https://www.surveymonkey.co.uk/r/8MYCF5Y>

Winchester Rural Neighbourhood Policing Team



@HantsPolice



Find us on Facebook



OfficialHantsPolice

Call Hampshire Constabulary on **101**

In an emergency always call **999**

Deaf? Non-emergency text **07781 480999**

For more information visit www.hampshire.police.uk



Hampshire & IOW
CRIMESTOPPERS
0800 555 111
Call anonymously with information about crime

**HAMPSHIRE
ALERT**





Appeal for Affordable Housing Sites Headbourne Worthy Parish Council

The lack of affordable housing for local people has been raised as a key issue for the parish. Hampshire Alliance for Rural Affordable Housing (HARAH) has been working with Headbourne Worthy Parish Council to look at ways of increasing the amount of affordable housing available for local people. In recent years house prices have increased rapidly, particularly in rural areas. This has resulted in many local people being unable to afford to buy or rent a home in the village they grew up in or work in and have had to leave to find cheaper, suitable accommodation elsewhere. The Parish Council and HARAH would like to provide some much-needed affordable homes, to ensure local people can stay within the area.

There are currently a number of households in housing need, who have indicated a local connection to Headbourne Worthy who are registered on Winchester City Council's housing register.

We are searching for a suitable site within the parish to provide 6-10 homes. The ideal site will be approx 1 acre in size, which is close to existing houses and with highway access that landowners are prepared to sell at rural exception land values of between £10,000-£12,000 per home plot.

Winchester City Council Local Plan Part 1 policy CP4 may allow residential development on sites such as these if the housing is affordable for local people and will remain so in perpetuity. These sites are called rural exception sites.

Anyone owning land which they would like to be considered for this project should submit details including a site location plan in writing or by email to:

Mags Wylie
Rural Housing Enabler
Action Hampshire
Westgate Chambers
Staple Gardens
Winchester
SO23 8SR

Email: mags.wylie@actionhants.org.uk

Tel: 01962 857361 All submissions to be made by 31 August 2017

